



# Germination

萌芽

DESIGN COMPANY  
May & Watkins Design

COMMISSIONING AGENCY  
Maine Arts Commission

BUILDING ARCHITECTS  
Michael Johanning, W&W Architects/Engineers,  
Bangor, Portland, Sarasota

MATERIALS  
Steel pipe, perforated steel, aluminum, bearings,  
solar panel, etc. All the steel is hot-dipped  
galvanized and powder coated

LOCATION  
Portland, ME

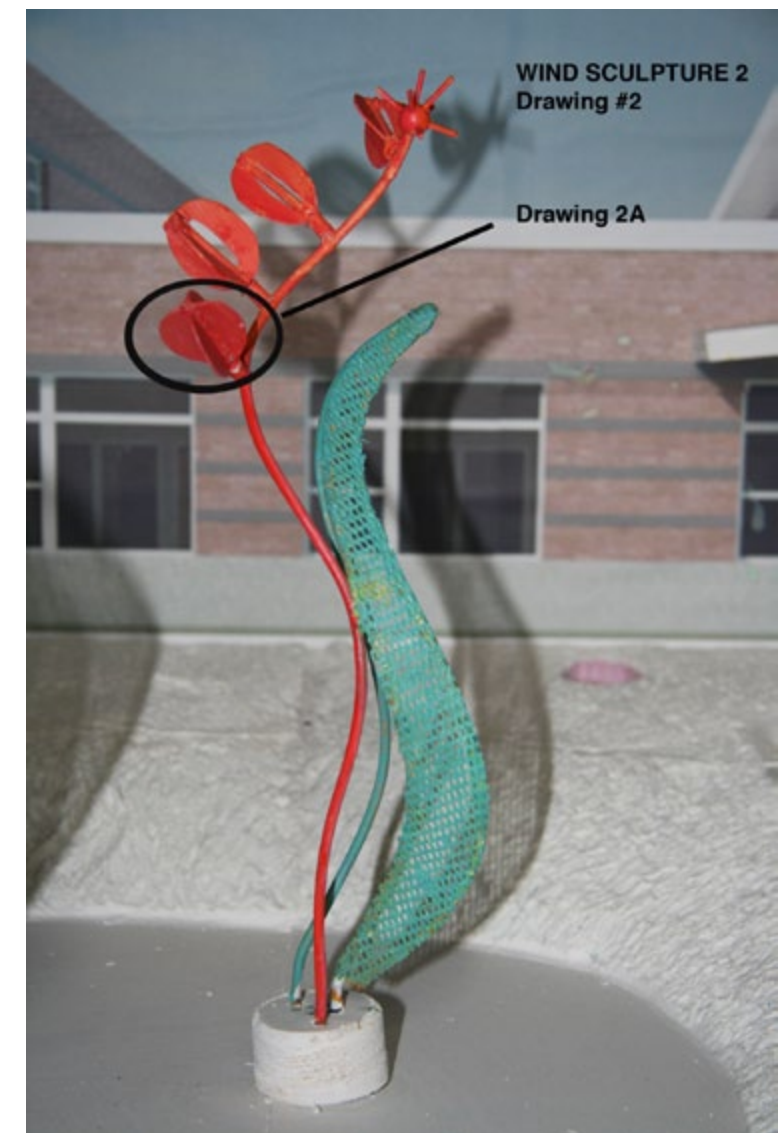
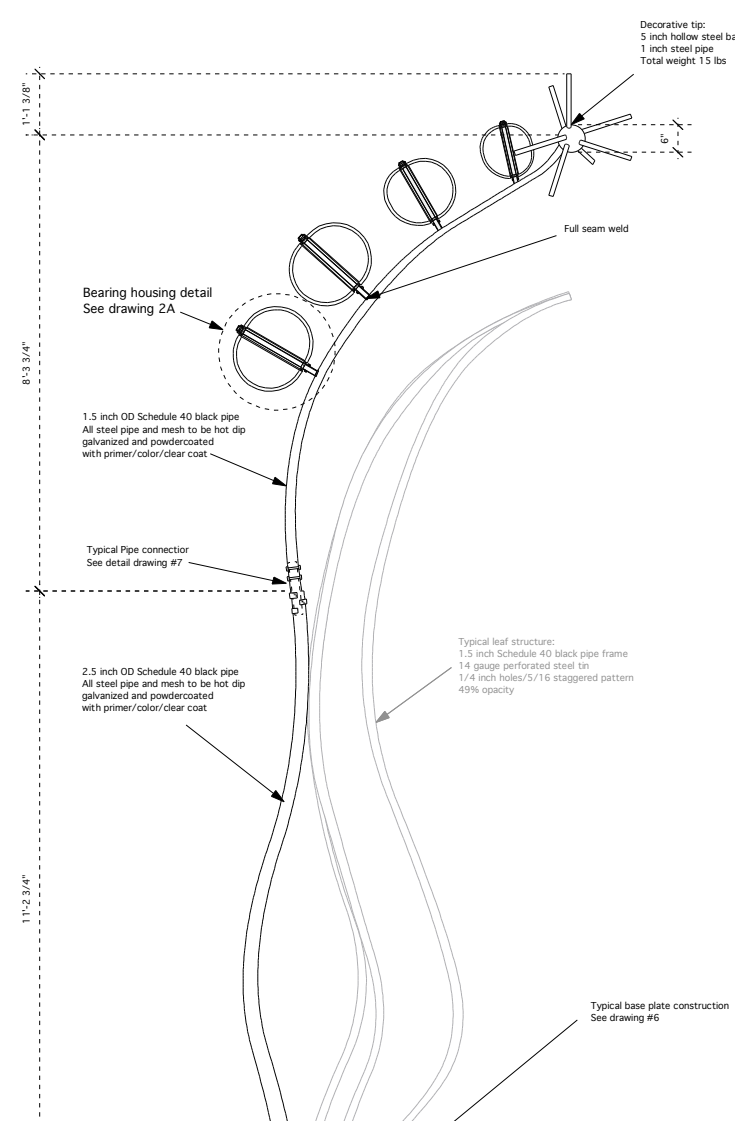
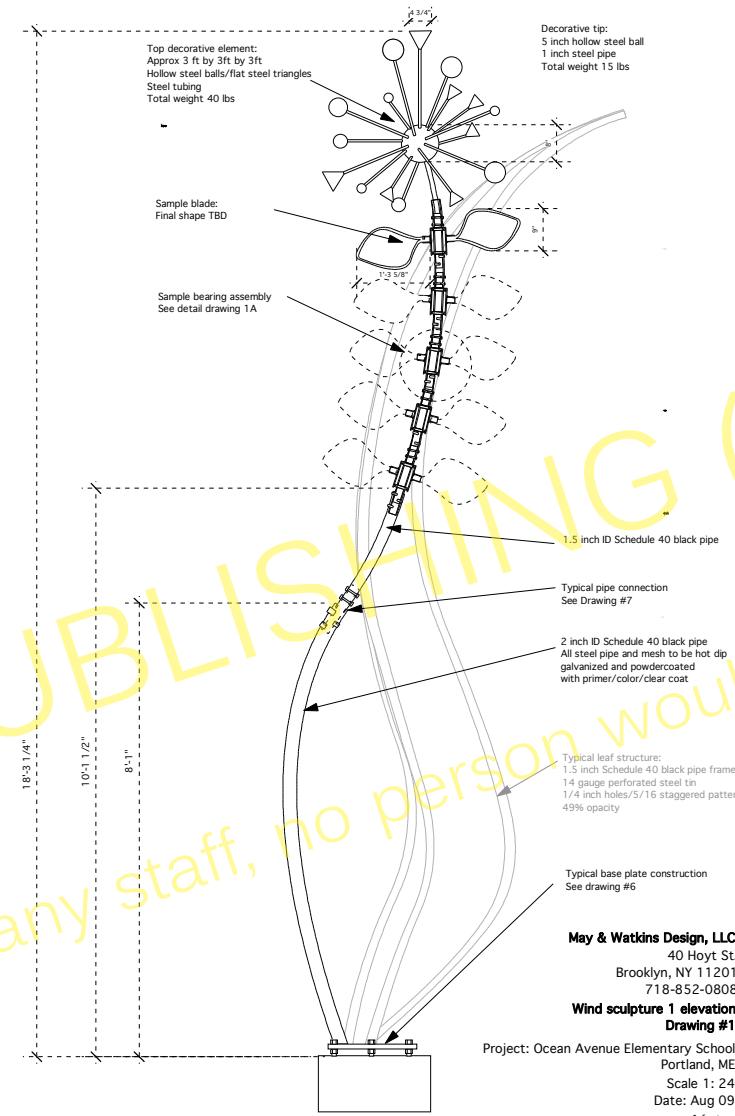
PHOTOGRAPHER  
May & Watkins Design

Germination was designed to complement a new LEEDs certified Public School. May & Watkins worked with the architect to develop the elements for the site. Beyond the visual references to growth, hence the title, their hope is to help kids become more aware of alternative or renewable energy, whether it is wind, sun or water power.

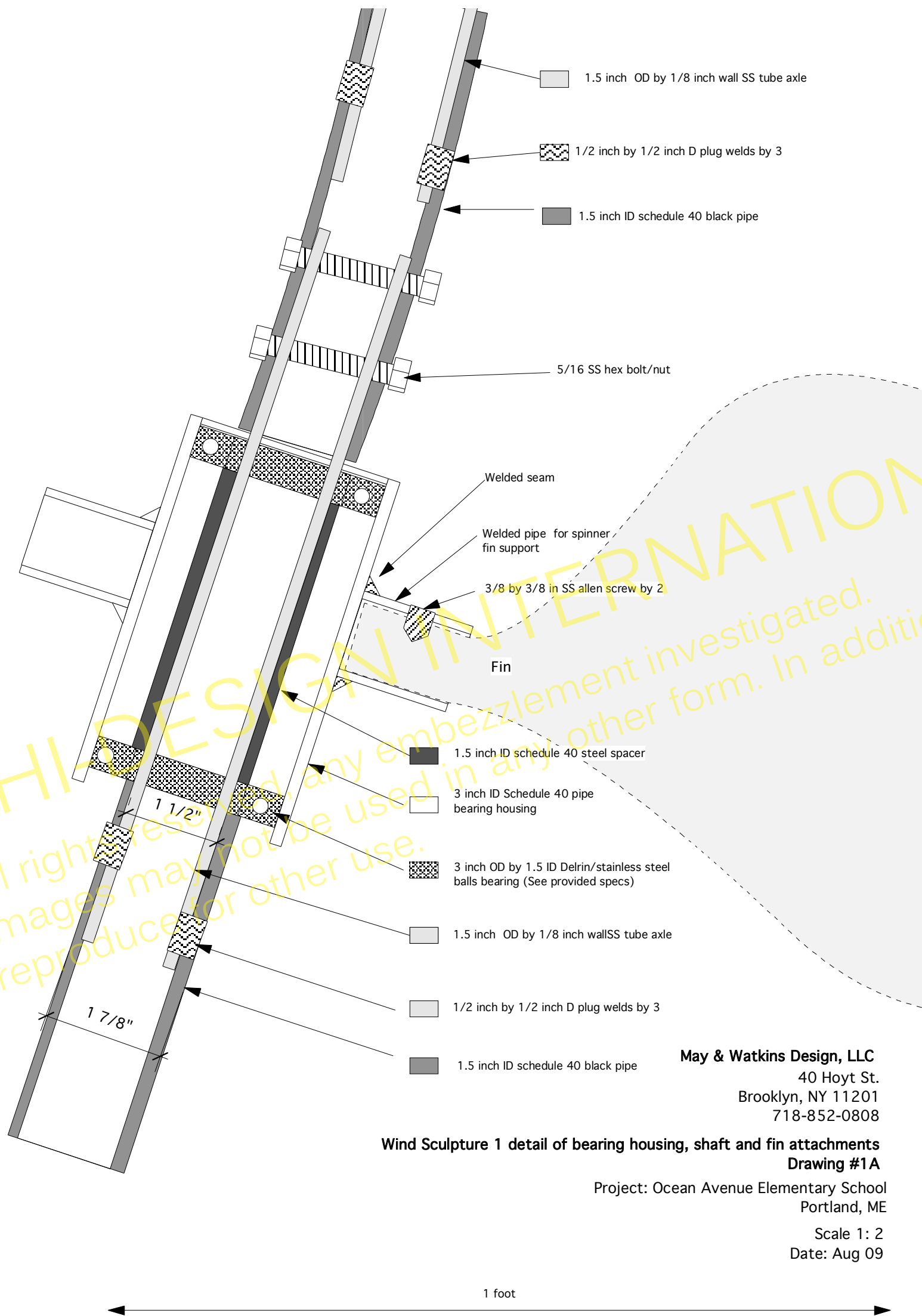
The piece is comprised of 5 units up to 24 ft H. Two are wind powered, one is solar powered, and one is water powered from the run off from the building. The 5th unit is a more intimate sculpture at 5 1/2 feet.











**May & Watkins Design, LLC**  
 40 Hoyt St.  
 Brooklyn, NY 11201  
 718-852-0808

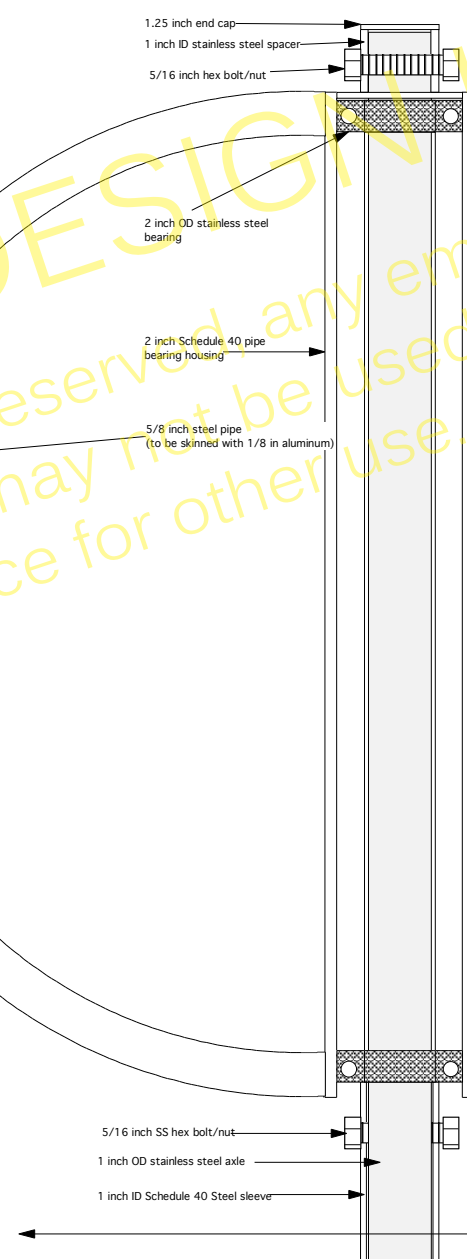
**Wind Sculpture 1 detail of bearing housing, shaft and fin attachments**  
**Drawing #1A**

Project: Ocean Avenue Elementary School  
 Portland, ME

Scale 1: 2  
 Date: Aug 09

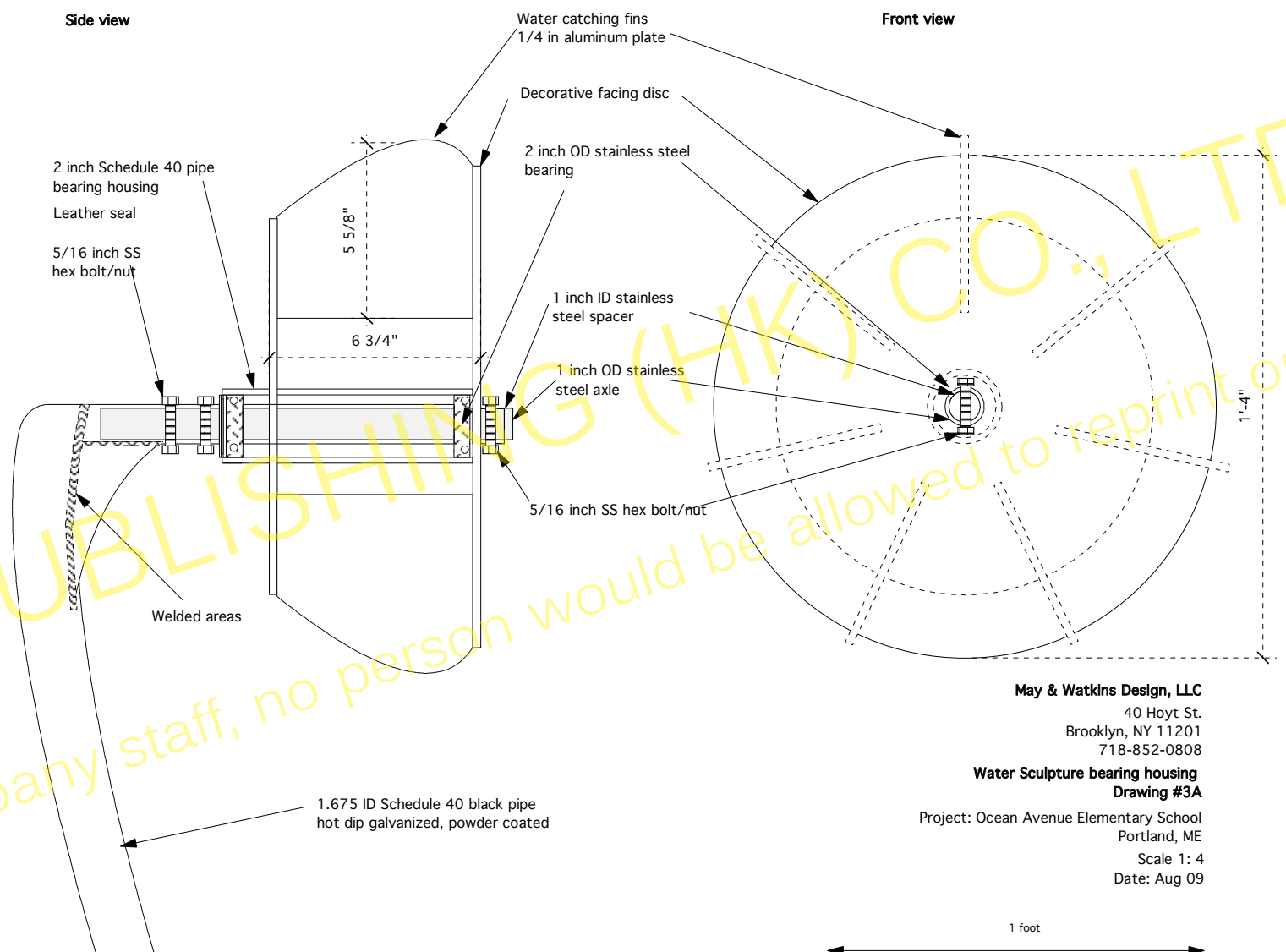




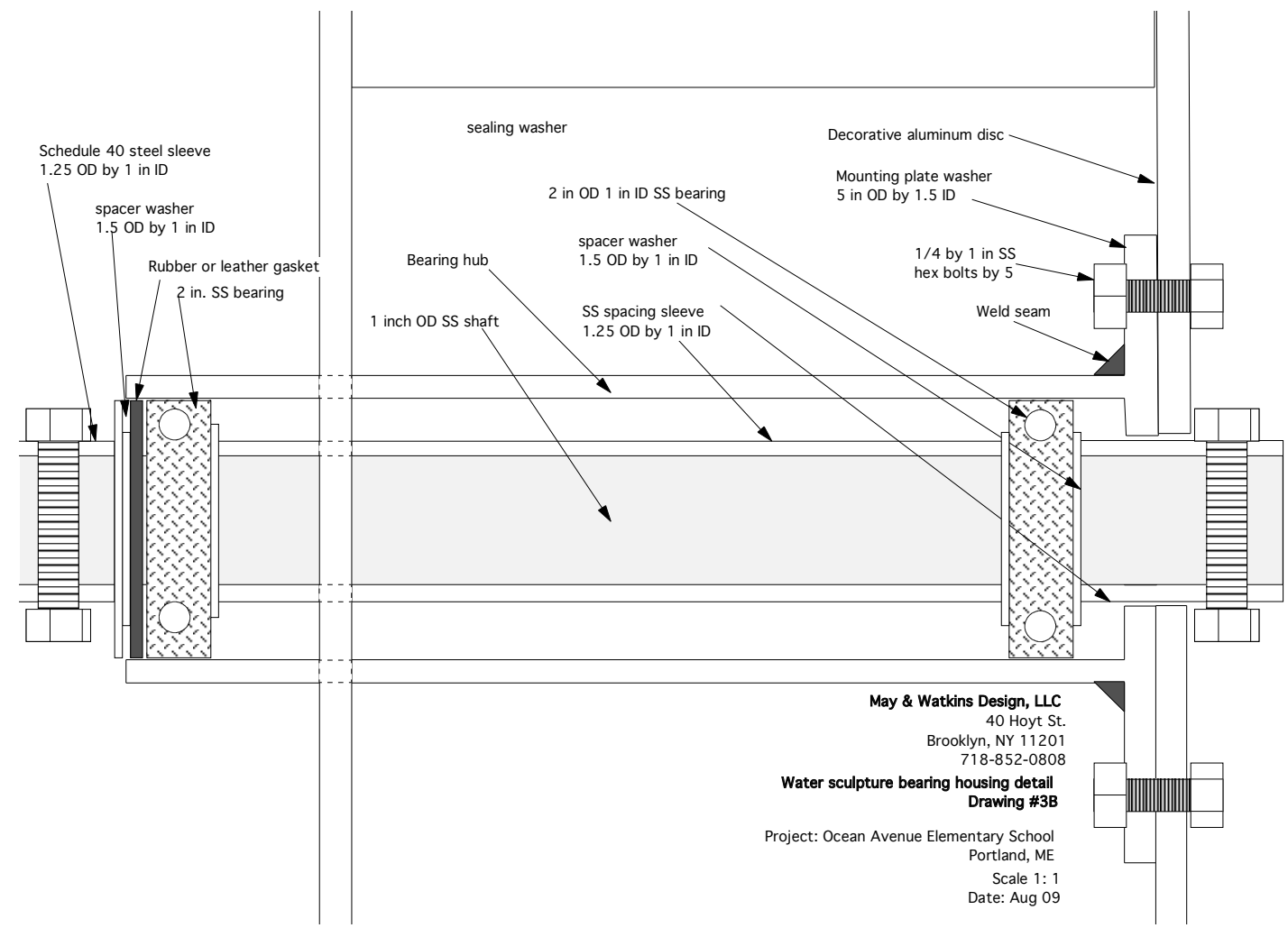


May & Watkins Design, LLC  
40 Hoyt St.  
Brooklyn, NY 11201  
718-852-0808  
**Wind Sculpture 2 bearing housing details**  
Drawing #2A  
Project: Ocean Avenue Elementary School  
Portland, ME  
Scale 1: 2  
Date: Aug 09

“萌芽”是为一家公立学校设计的，该校刚刚获得“绿色能源与环境设计先锋奖”（LEED）的认证。May & Watkins 设计公司在建筑师的帮助下，完成了雕塑各个部件的研制工作。除了我们视觉上能看到的成长，也就是我们题目所说的萌芽，他们还希望能够培养孩子们对可替代能源及可再生能源的意识，比如风能、太阳能或是水力。本件作品分为5组，高度达24英尺。两组是风能发电；一组是太阳能发电；一组是利用建筑里流出的水而进行水能发电。第六组雕塑较小，只有5.5英尺高。



May & Watkins Design, LLC  
40 Hoyt St.  
Brooklyn, NY 11201  
718-852-0808  
**Water Sculpture bearing housing**  
Drawing #3A  
Project: Ocean Avenue Elementary School  
Portland, ME  
Scale 1: 4  
Date: Aug 09

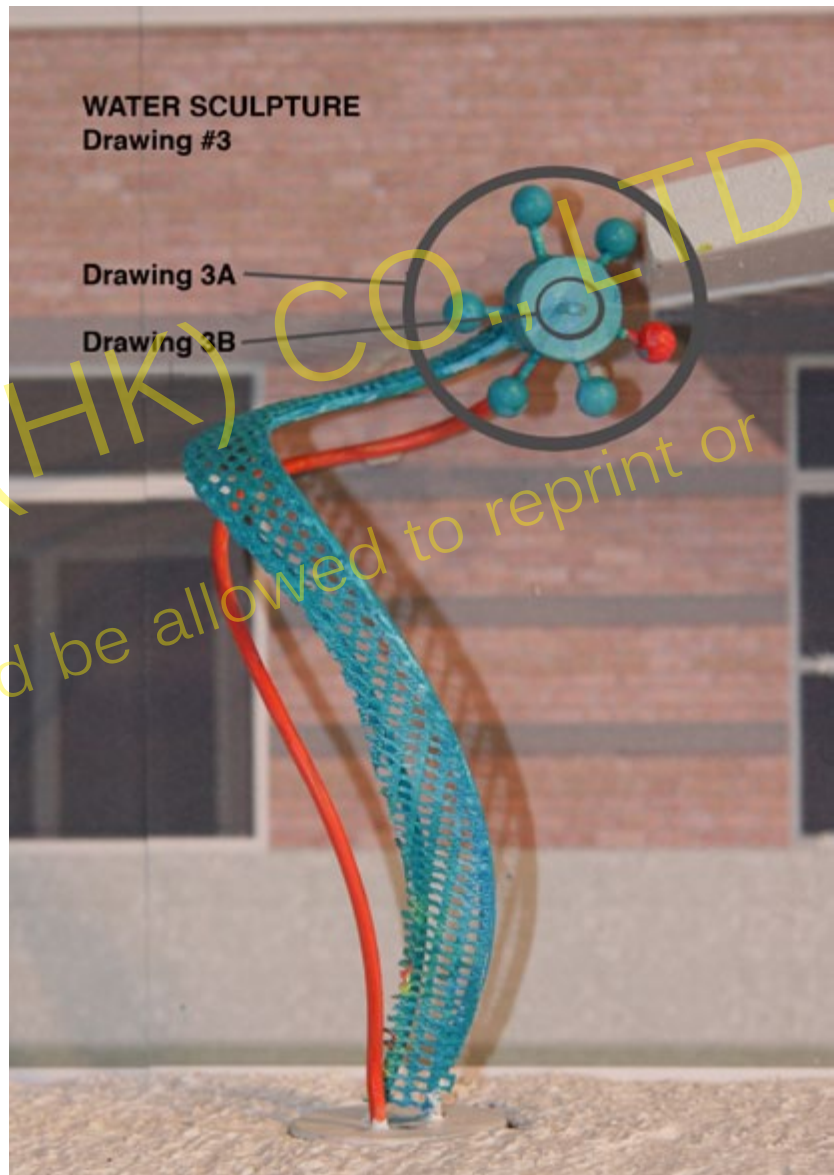
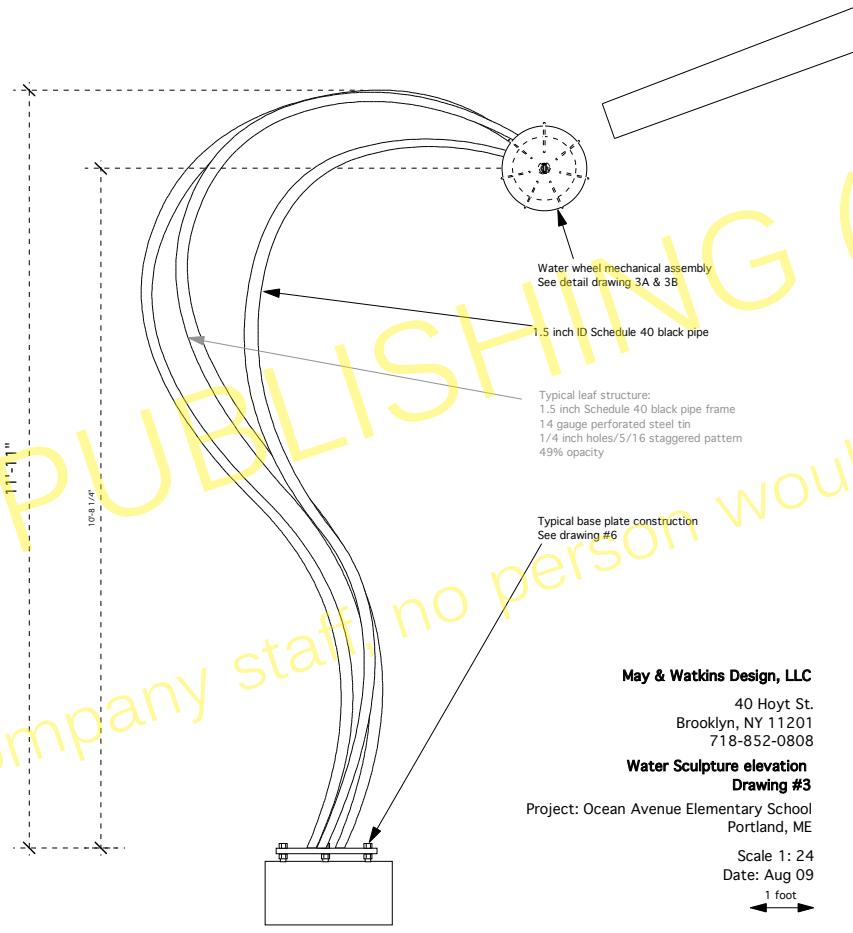
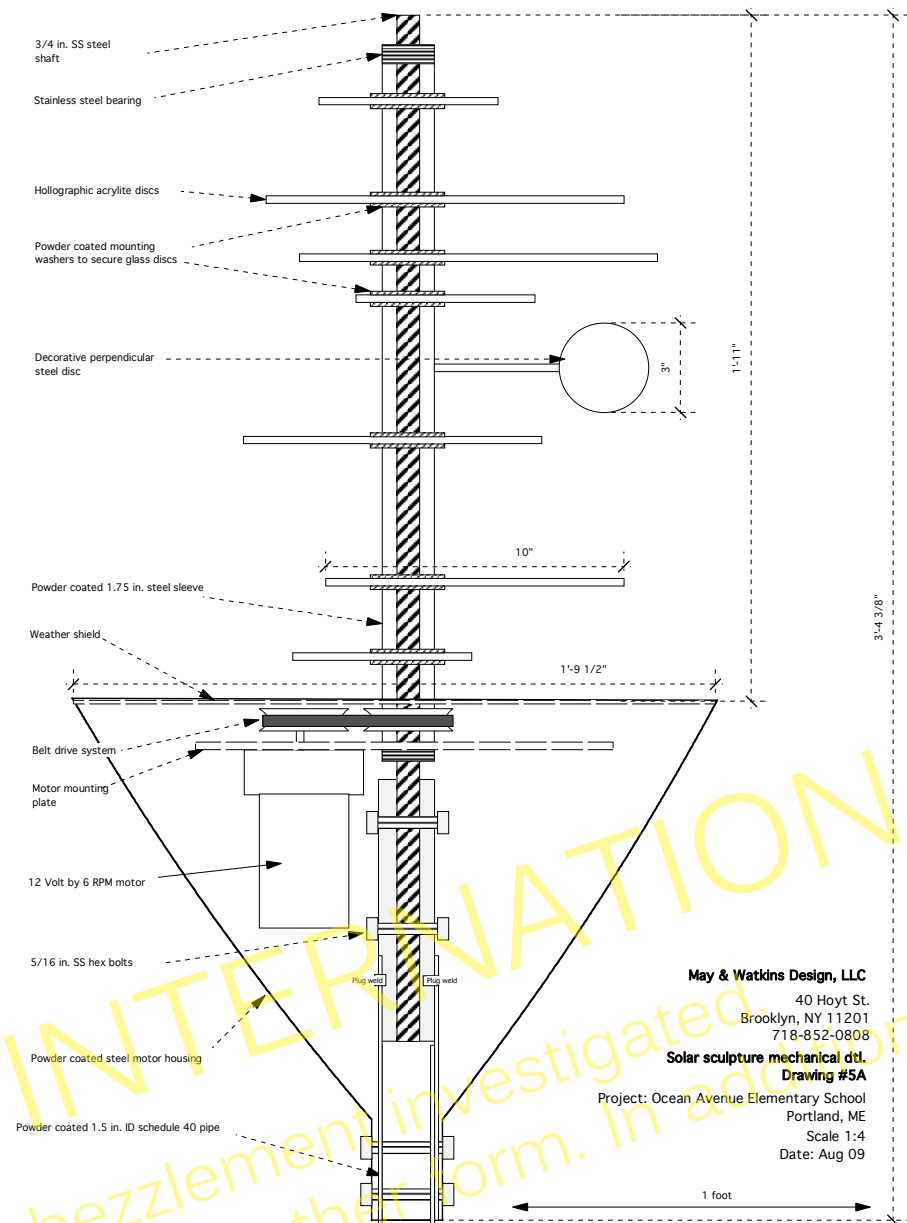


May & Watkins Design, LLC  
40 Hoyt St.  
Brooklyn, NY 11201  
718-852-0808  
**Water sculpture bearing housing detail**  
Drawing #3B  
Project: Ocean Avenue Elementary School  
Portland, ME  
Scale 1: 1  
Date: Aug 09

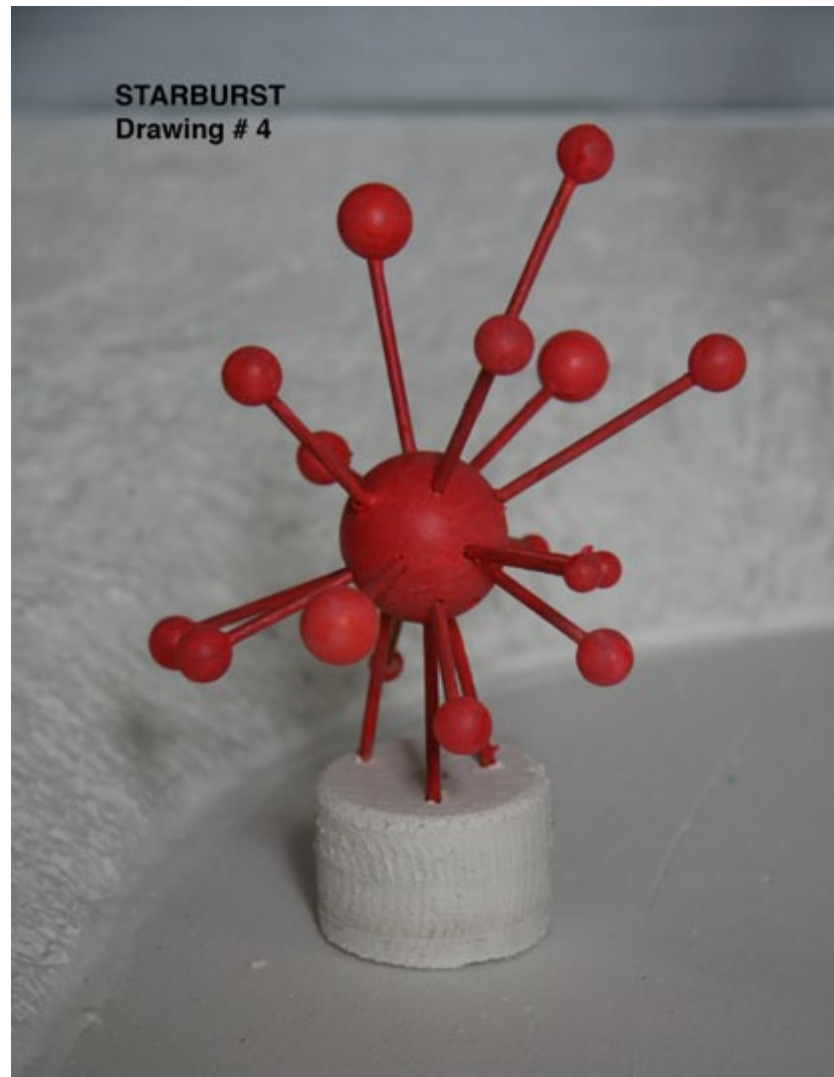
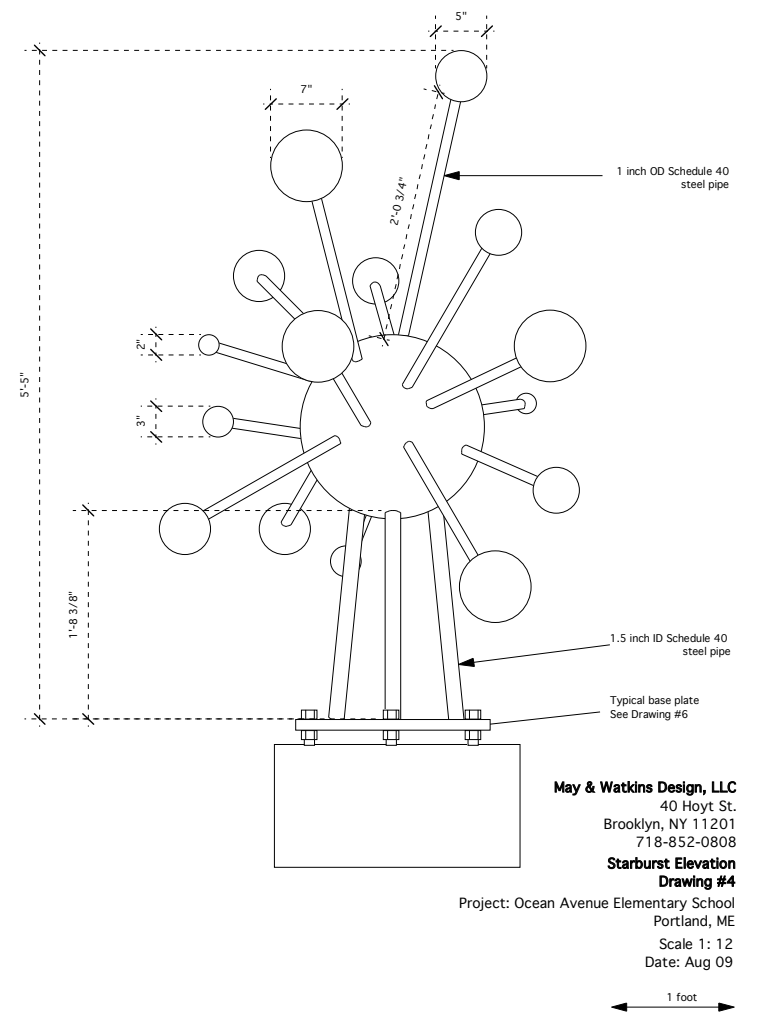




**SOLAR SCULPTURE**  
Drawing # 5  
Detail 5A



**WATER SCULPTURE**  
Drawing #3  
Drawing 3A  
Drawing 3B



**STARBURST**  
Drawing # 4

All rights reserved, any embezzlement investigated  
Images may not be used in any other form. In addition to company staff, no person would be allowed to reprint or reproduce for other use.